

Welcome to Lake Minnetonka

Avoid these common offenses

According to Hennepin County Sheriff's Water Patrol, the following boating rules are among the most common boating violations. Follow the rules and common sense for safe and courteous boating. For a complete list of boating rules and regulations, go to the Lake Minnetonka Conservation District, lmcd.org, and the Minnesota Department of Natural Resources, dnr.state.mn.us.

- **Life Jackets:** For each person on board, carry one readily accessible Coast Guard approved Type I, II, or III life jacket. Watercraft of 16 feet or longer must have one Type IV throwable device. **Note:** Minnesota state law requires a life jacket be worn by children less than 10 years of age when aboard watercraft that is underway.
- **Under the influence:** No person shall operate any watercraft while under the influence of an alcoholic beverage or controlled substance.

- **Registration:** All motorized watercraft regardless of length and nonmotorized watercraft over 10 feet must have current registration visible.
- **No riding on gunwales or decking:** No person should ride on gunwales or decking over the bow or transom while boat is underway unless there are adequate guard rails.
- **No personal watercraft after hours:** Hours of operation for personal watercraft are 9:30 a.m. to one hour before sunset. Cannot operate more than 30 consecutive minutes in a single area.
- **Quiet Waters Areas:** No person shall operate a motor-operated watercraft on quiet water areas of the lake at a speed in excess of 5 mph, or at a speed that results in more than a minimum wake. The areas of the lake restricted to quiet waters are shown on the other side of this map.

- **Observer required for boats to tow persons:** For a watercraft and operator to tow a person on water skis, surfboard, tube or similar device, an additional person – the observer, at least 12 years old – is required to continually observe the person being towed.
- **Navigational lights:** When boating (underway) between sunset and sunrise, you must display proper navigational lights: a red light to port, a green light to starboard, and a white light to stern. At anchor, all boats must display a white light visible 360 degrees.

- **Speed limits:** 40 mph during the daytime, 20 mph at night, and under 5 mph in Quiet Water Areas and within 300 feet of shorelines, beaches, docks, anchored boats and swimmers.
- **Quiet hours:** Between 10 p.m. and 7 a.m., any equipment or device that is plainly audible at a distance of 150 feet shall be a noise violation.



Check your boat

IS IT **CLEAN?** DID YOU **DRAIN?** DID YOU **DRY?** DID YOU **DISPOSE?**

Bridge heights

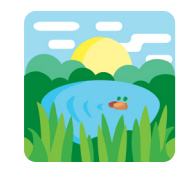
These are the vertical clearances under bridges to the normal lake elevation 929.4 feet. For current lake elevations, go to the Minnehaha Creek Watershed District website, minnehahacreek.org.

Channel	Clearance	Channel	Clearance
Arcola	14'9"	Hendrickson	15'0"
Black Lake	9'9"	Libbs Lake	8'10"
Boy Scout	6'11"	Lost Lake	11'1"
Carson's Bay	5'8"	Narrows	18'3"
Coffee	13'6"	Noerenberg	12'8"
Emerald Lake	12'4"	St. Albans Bay	12'5"
Forest Lake	11'3"	Seton Lake	12'8"
Grays Bay	14'4"	Tanager Lake	10'0"
Halsted Bay	14'11"	Zimmermans Pass	11'6"

Join Lake Pledge

Aquatic invasive species (AIS) can cause irreparable damage to native fish and plant populations affecting lake recreation, human health, property values, and the economy.

Learn what you can do to prevent the spread of AIS by joining Lake Pledge at lakepledge.com or download the Lake Pledge app on Apple's App Store or Google Play.

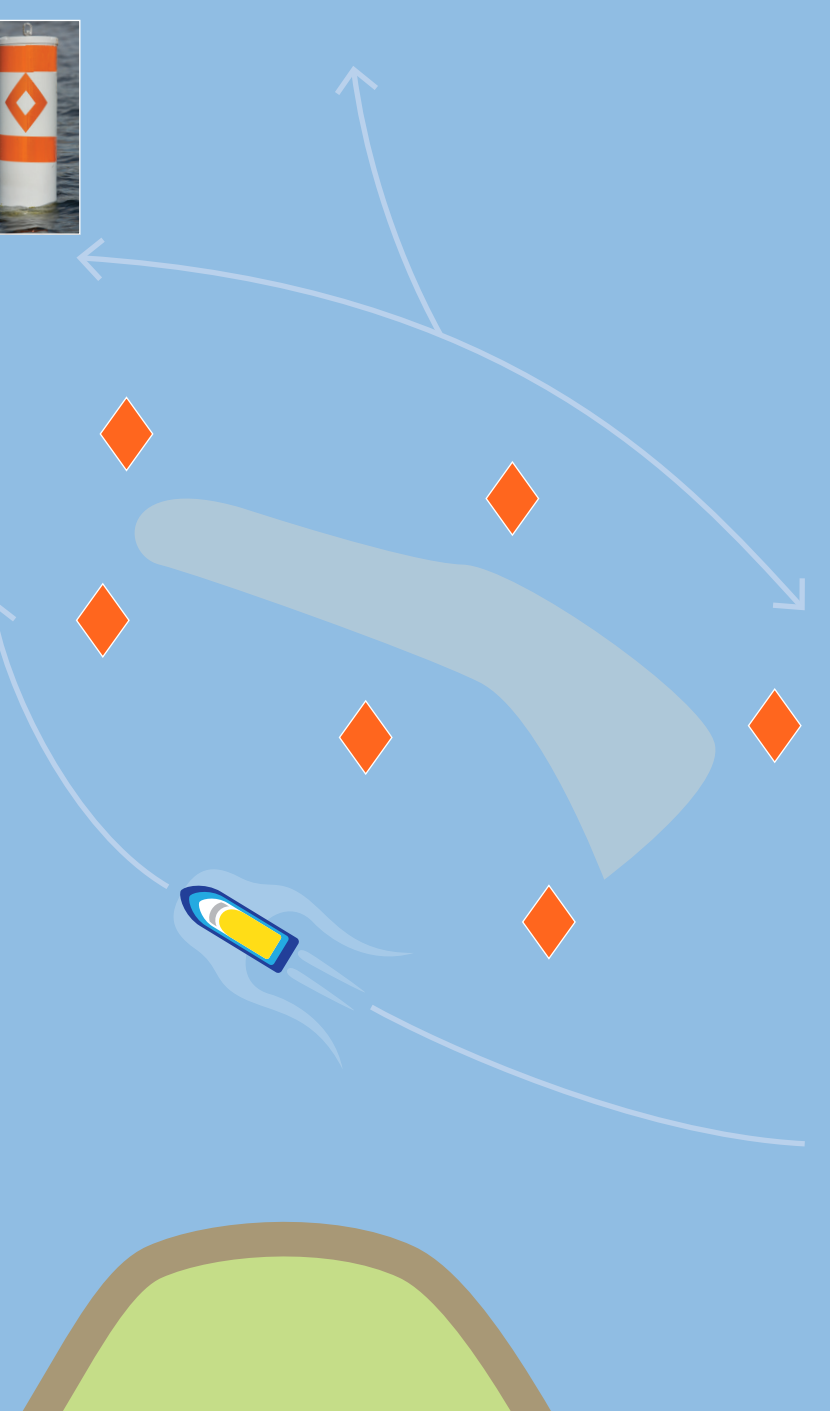


The Narrows Channel. Originally dredged in 1884.



Danger buoys

Identifies potential hazards in the middle of a bay



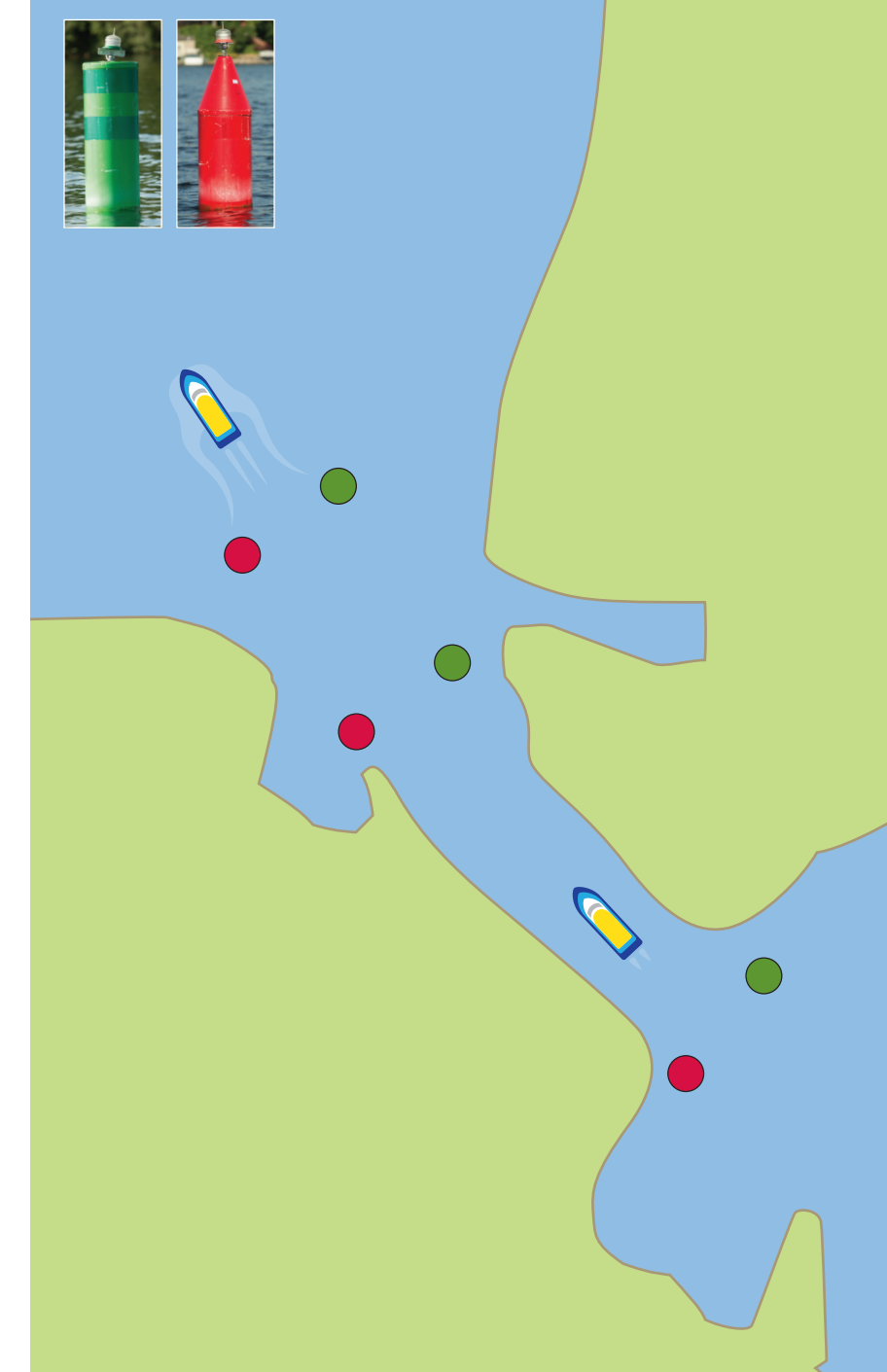
Point buoys

Identifies potential hazards between buoy and the closest shore



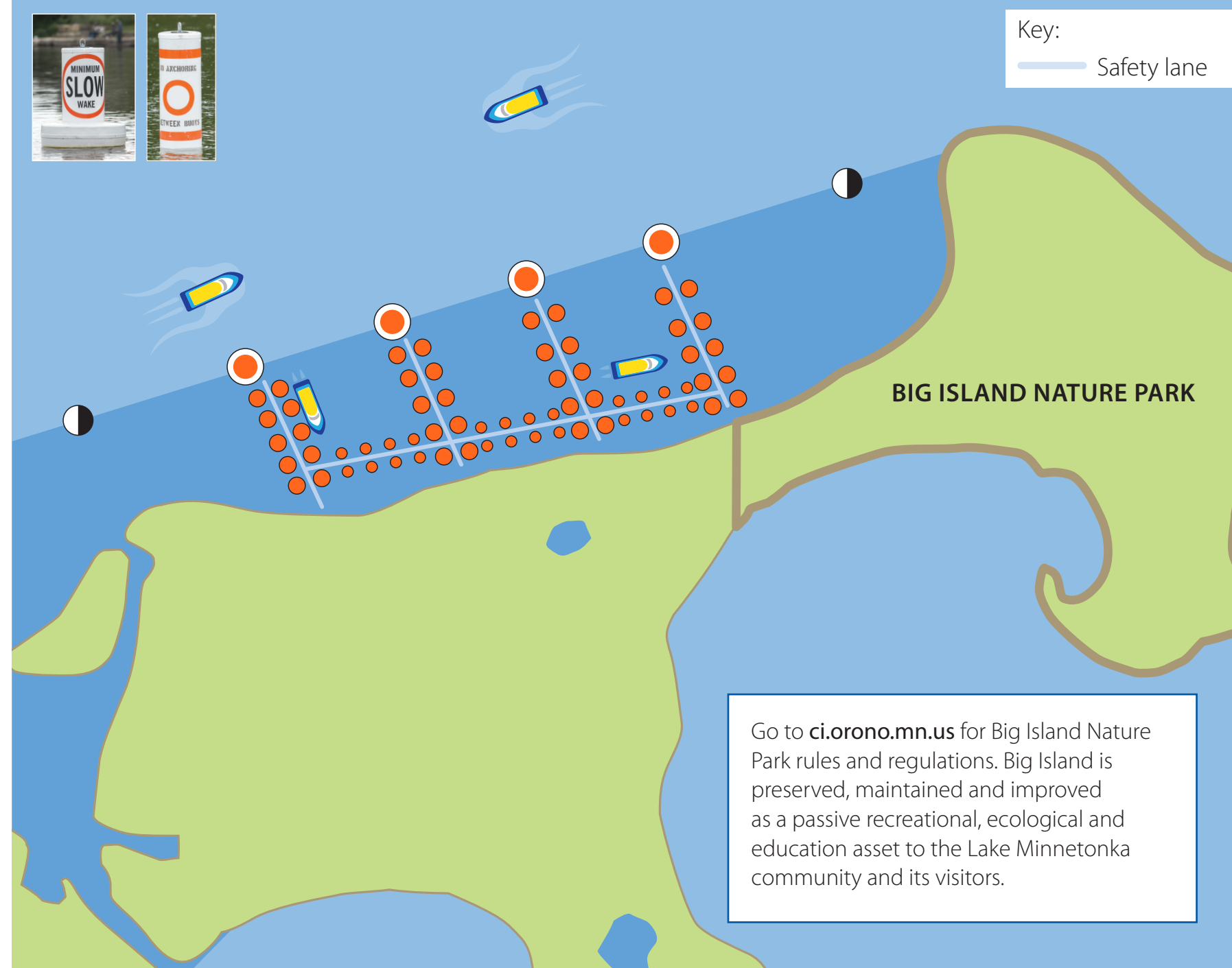
Channel buoys

Stay between red and green channel buoys. Create minimum wake when 150 feet from shore/structure.



Big Island Cruiser's Cove

No anchoring between designated safety lanes. Minimum wake in designated quiet water.



Go to ci.orono.mn.us for Big Island Nature Park rules and regulations. Big Island is preserved, maintained and improved as a passive recreational, ecological and education asset to the Lake Minnetonka community and its visitors.



- **New rule beginning January 1, 2023:** Maintain a 5 mph speed limit on all boats within 300 feet from shore. The current rule requiring a 150-foot distance from docks, anchored boats, swimmers or scuba divers' warning flags throughout the lake will not change.
- Minimize repetitive passes. Once you've run a line, move on to another area. Comply with all signs and no wake zones.
- Respect the rights of others so everyone can enjoy their time on the water – keep the noise down, be courteous to other boaters, and show consideration to everyone.
- Be aware of your environment and what's going on around you.
- You are responsible for your wake and any damages or injuries it causes.

Lake Minnetonka

Hennepin County, Minnesota

April 2023

State or U.S. Highway

County Road

Municipal Street

Municipal Boundary

Restaurant

Regional or County Park

Trail

Three Rivers Parks Regional Trails

Shoreline Fishing Areas

Reef

Quiet Waters (shaded areas)

Hennepin County Sheriff's Water Patrol

Lake Minnetonka Conservation District

For summary of rules and regulations - see back of map

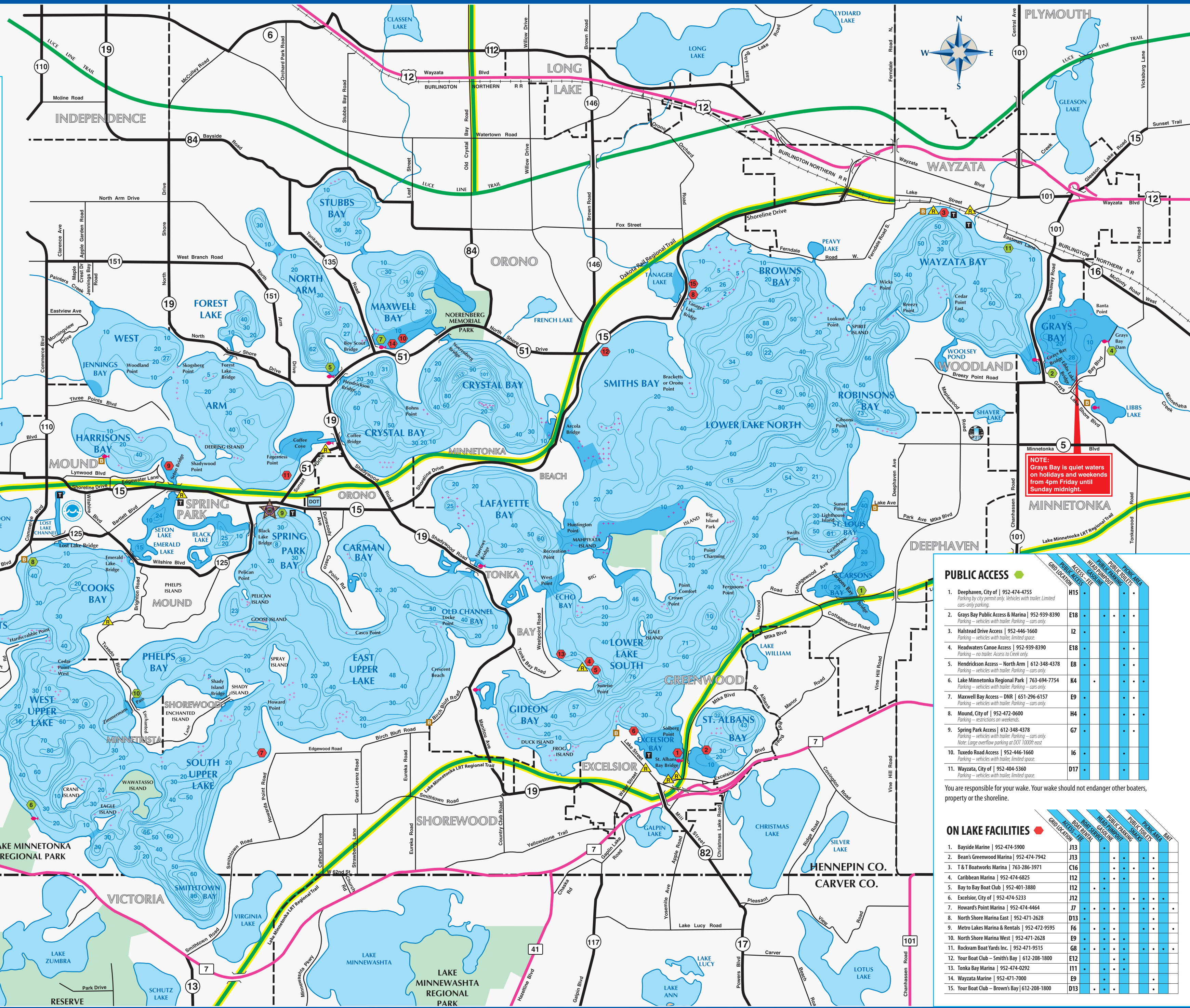
Statute Miles

Lake depth contours are shown in number of feet below the crest of Grays Bay Dam, Elevation 929.4 above sea level.

Prepared by the Hennepin County Department of Environment and Energy, 701 Fourth Ave S, Suite 700 Minneapolis, MN 55415-1842

Free copies of this map are available at the Sheriff's Water Patrol at Spring Park Bay, and at the Ridgedale Hennepin County Service Center, or by calling the LMCD at 952-745-0789 or Environment and Energy at 612-348-3777

FOR FREE DISTRIBUTION ONLY



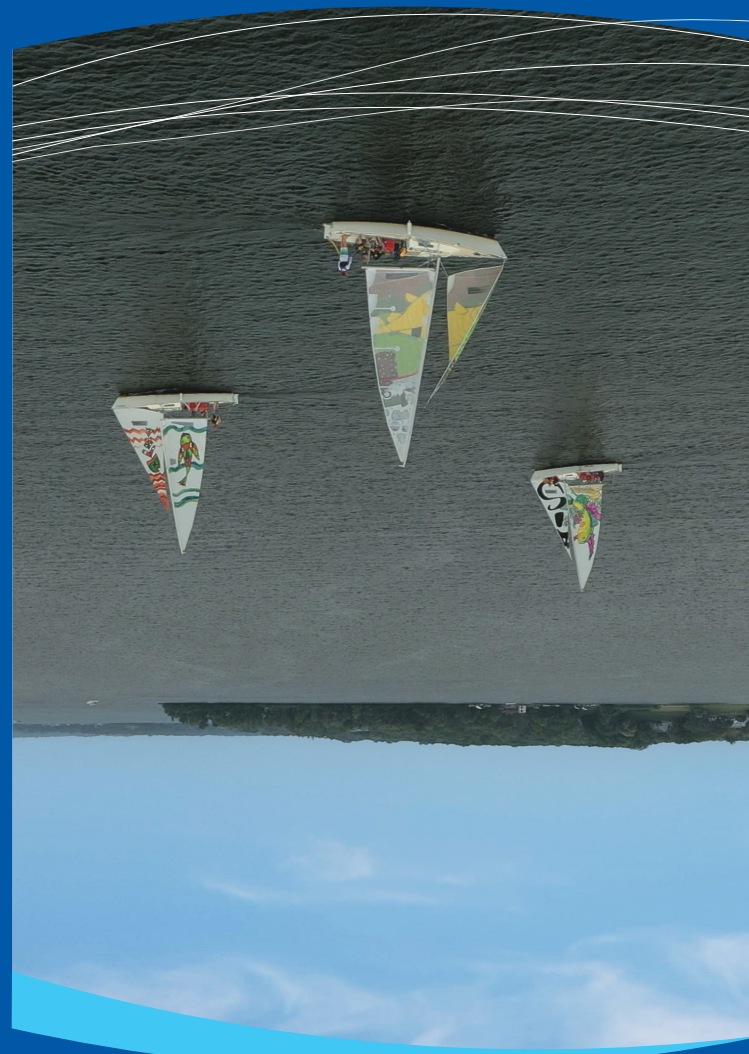
PUBLIC ACCESS

Access Point	City/County	Phone	Public Access	Public Boat Ramp	Public Parking	Public Restrooms	Public Picnic Area
1. Deephaven	City of Deephaven	952-474-4755	•	•	•	•	•
2. Grays Bay	Public Access & Marina	952-939-8390	•	•	•	•	•
3. Halstead Drive	Access	952-446-1660	•	•	•	•	•
4. Headwaters	Canoe Access	952-939-8390	•	•	•	•	•
5. Hendrickson	Access - North Arm	612-348-4378	•	•	•	•	•
6. Lake Minnetonka Regional Park	Regional Park	763-694-7754	•	•	•	•	•
7. Maxwell Bay	Access - DNR	651-296-6157	•	•	•	•	•
8. Mound	City of Mound	952-472-0600	•	•	•	•	•
9. Spring Park	Access	612-348-4378	•	•	•	•	•
10. Tuxedo Road	Access	952-446-1660	•	•	•	•	•
11. Wayzata	City of Wayzata	952-404-5360	•	•	•	•	•

You are responsible for your wake. Your wake should not endanger other boaters, property or the shoreline.

ON LAKE FACILITIES

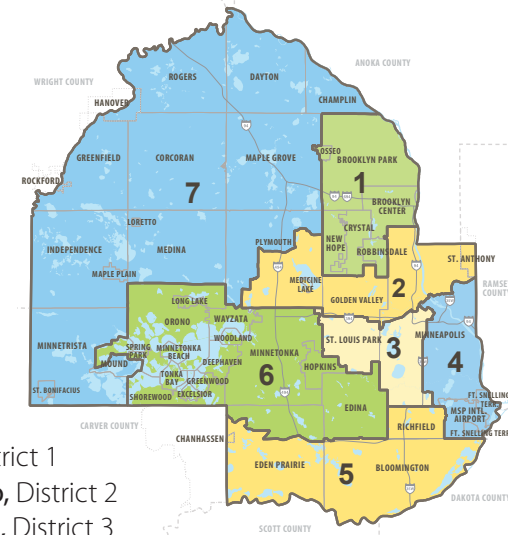
Facility	Phone	Public Access	Public Boat Ramp	Public Parking	Public Restrooms	Public Picnic Area
1. Bayside Marine	952-474-5900	•	•	•	•	•
2. Bear's Greenwood Marina	952-474-7942	•	•	•	•	•
3. T & T Boatworks Marina	763-286-3971	•	•	•	•	•
4. Caribbean Marina	952-474-6825	•	•	•	•	•
5. Bay to Bay Boat Club	952-401-3880	•	•	•	•	•
6. Excelsior, City of	952-474-5233	•	•	•	•	•
7. Howard's Point Marina	952-474-4464	•	•	•	•	•
8. North Shore Marina East	952-471-2628	•	•	•	•	•
9. Metro Lakes Marina & Rentals	952-472-9595	•	•	•	•	•
10. North Shore Marina West	952-471-2628	•	•	•	•	•
11. Rockvram Boat Yards Inc.	952-471-9515	•	•	•	•	•
12. Your Boat Club - Smith's Bay	612-206-1800	•	•	•	•	•
13. Tonka Bay Marina	952-474-6292	•	•	•	•	•
14. Wayzata Marine	952-471-7000	•	•	•	•	•
15. Your Boat Club - Brown's Bay	612-208-1800	•	•	•	•	•



MINNESOTA
HENNEPIN COUNTY

Hennepin County Board of Commissioners

The Hennepin County Board of Commissioners is the governing body of Hennepin County.



- Jeff Lunde, District 1
 - Irene Fernando, District 2
 - Marion Greene, District 3
 - Angela Conley, District 4
 - Debbie Goettel, District 5
 - Chris LaTondresse, District 6
 - Kevin Anderson, District 7
- hennepin.us/your-government

Lake Minnetonka Conservation District
952-745-0789
5341 Maywood Road, Suite 200
Mound, MN 55364
lmcd.org

Hennepin County Sheriff's Water Patrol
952-258-5321
4141 Shoreline Dr.
Spring Park, MN 55384
hennepinsheriff.org

Hennepin County Environment and Energy
612-348-3777
hennepin.us/environment