

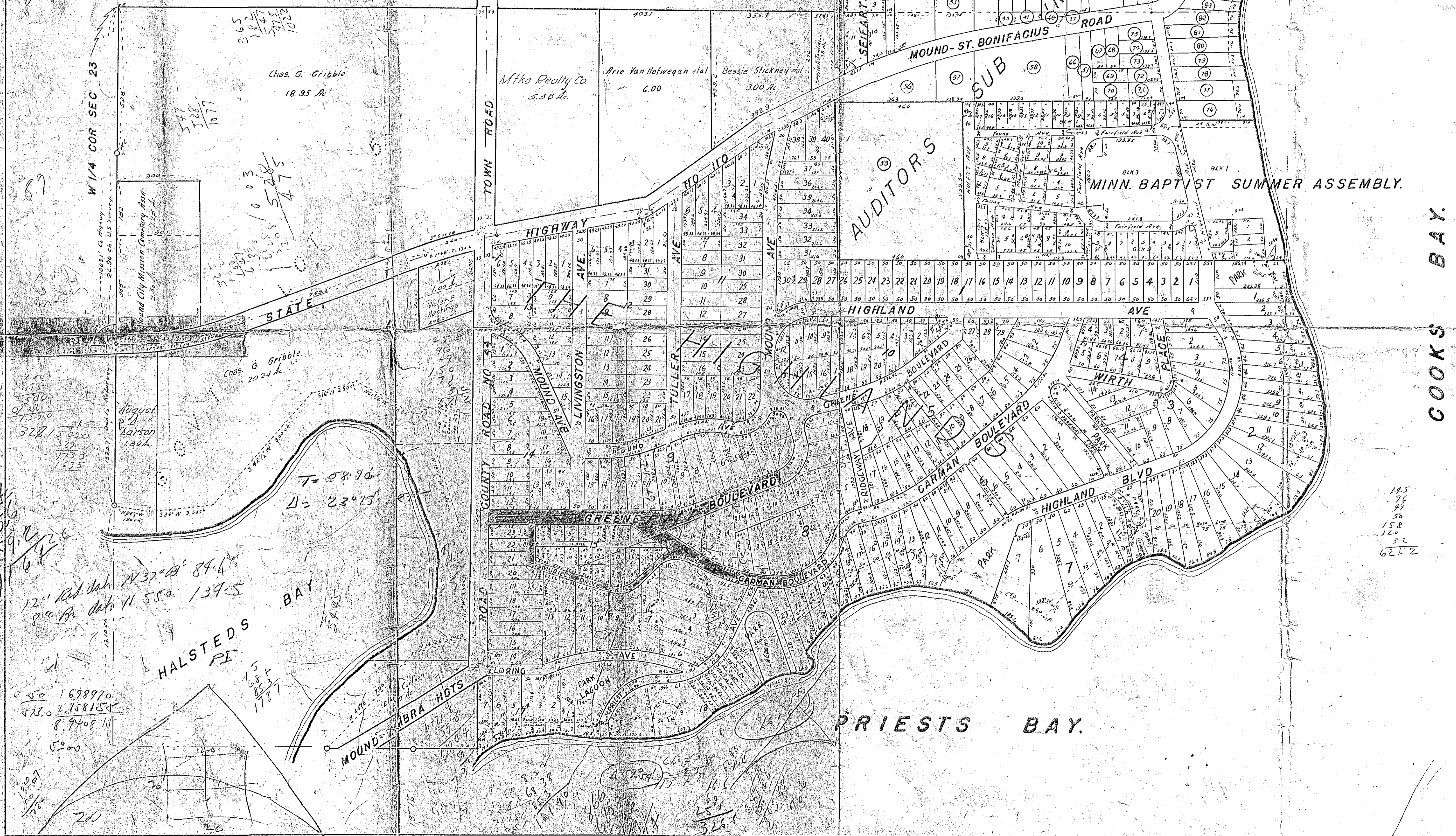


763

12" ASDEN  
S 11° E 20.4'  
12" OAK S 85° W 71.9'  
Sugar 12" S 45° E 72.3'

S. 1/2 SEC. 23, T. 117, ---

R. 24.

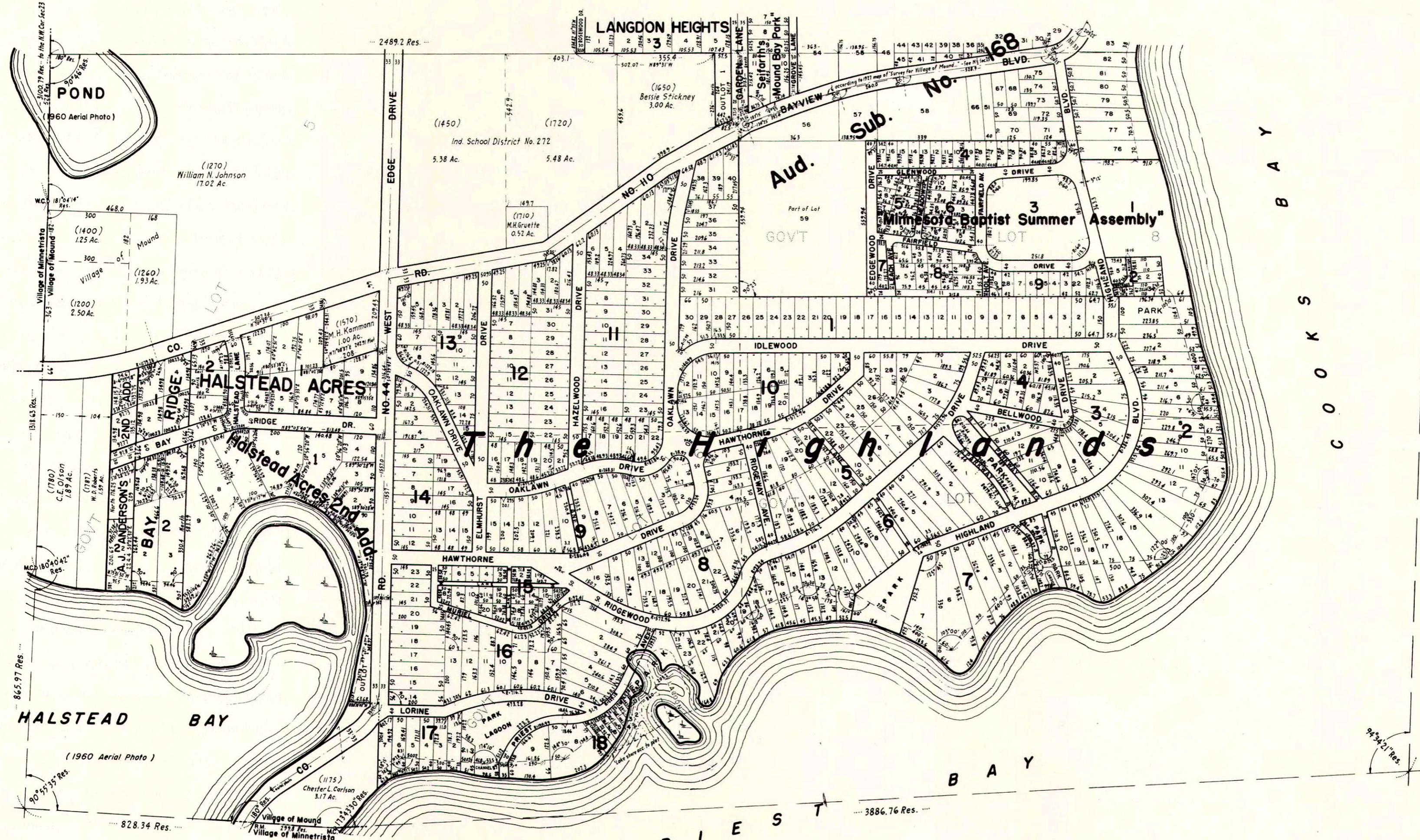


COOKS BAY.

145  
96  
49  
50  
158  
120  
32  
62.2

HOWARD W. PERKINS  
COUNTY SURVEYOR  
HENNEPIN COUNTY, MINN.  
M.S. 11-49.

# S 1/2 SEC. 23, T.117, R.24



SEC. 22, T.117, R.24

SEC. 26, T.117, R.24

L A K E M I N N E T O N K A

3422.24 Res. to M.C.

ELMER J. PETERSON  
COUNTY SURVEYOR  
HENNEPIN COUNTY, MINN.

15 10-61 Chkd. by JJS

THIS IS NOT A LEGALLY RECORDED PLAT.  
THIS PLAT IS COMPILED FROM THE DESCRIPTIONS IN THE COUNTY AUDITOR'S TAX RECORD, PLATS OF RECORD IN THE COURT HOUSE, INFORMATION FROM THE STATE AND COUNTY HIGHWAY DEPARTMENTS AND OTHER SOURCES.

(1960 Aerial Photo)

(1960 Aerial Photo)

865.97 Res.

828.34 Res.

3886.76 Res.

9424.1 Res.

2489.2 Res.

(1270)  
William N. Johnson  
17.02 Ac.

(1400)  
1.25 Ac.

(1260)  
1.93 Ac.

(1200)  
2.50 Ac.

(1780)  
C.E. Olson  
1.89 Ac.

(1787)  
W.D. Roberts  
1.57 Ac.

(1570)  
M.H. Kammann  
1.00 Ac.

(1450)  
Ind. School District No. 272  
5.38 Ac.

(1720)  
5.48 Ac.

(1710)  
M.H. Gruette  
0.52 Ac.

LANGDON HEIGHTS

(1650)  
Bessie Stickney  
3.00 Ac.

Aud. Part of Lot 59

Sub. No. 168

Minnesota Baptist Summer Assembly

GOV'T

HALSTEAD ACRES

The Hawthornes

HAWTHORNE

HIGHLAND

BELLWOOD

COOKS

BAY

BAY

PRIEST

HALSTEAD BAY

(1175)  
Chester L. Carlson  
3.17 Ac.

Village of Mound  
Village of Minnetrista

P R

(1960 Aerial Photo)

ELMER J. PETERSON