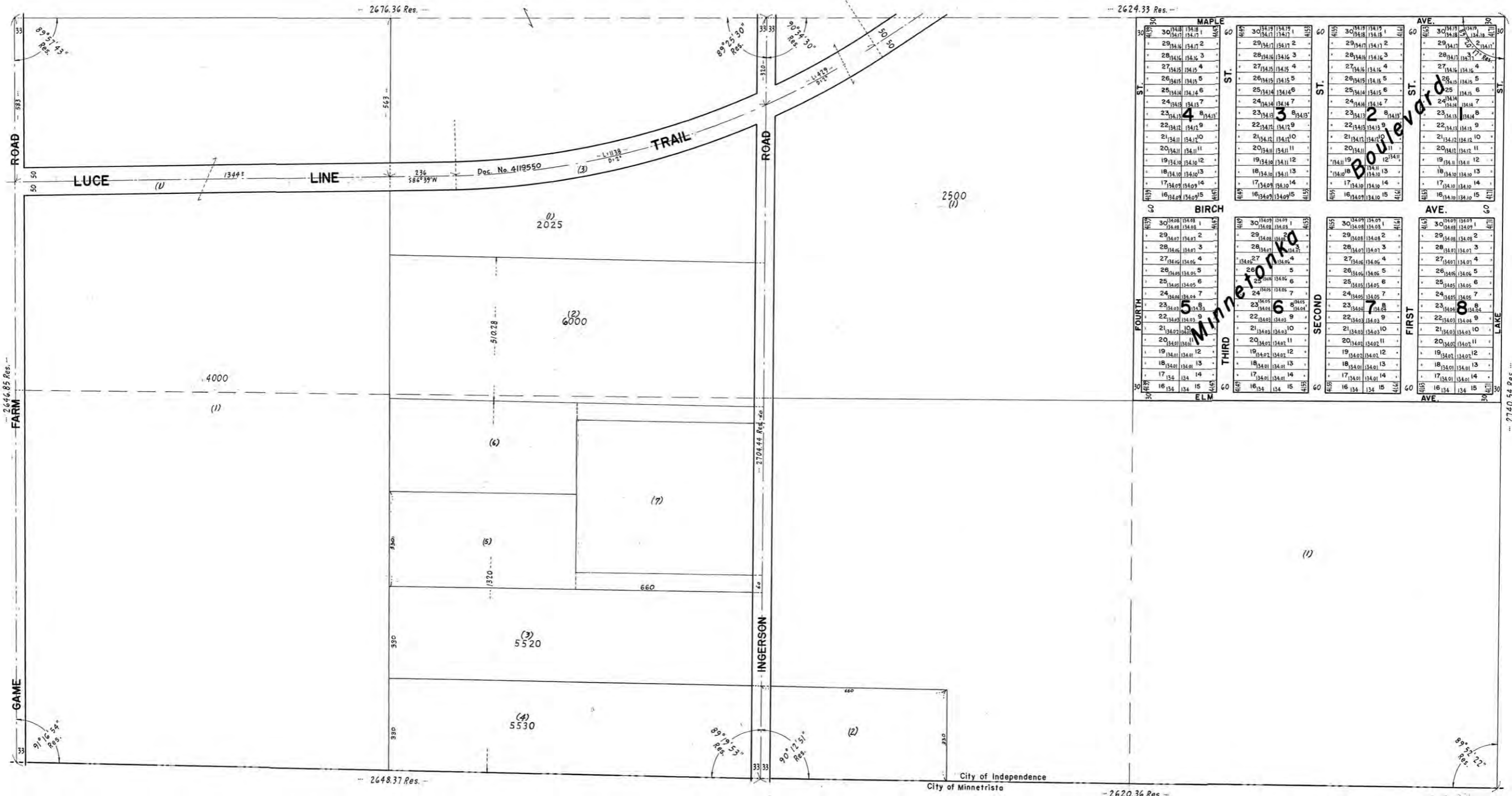


S 1/2 SEC. 34, T.118, R.24



This is not a legally recorded map. It represents a compilation of information and data from City, County and State road authorities and other sources. The information on this map should be used for reference purposes only. Hennepin County does not guarantee the accuracy of material herein contained and is not responsible for any misuse or misrepresentation of this information or its derivatives.



ST.	MAPLE	BIRCH	ELM
30	30 3418 3418 1	30 3409 3409 1	30 3401 3401 1
29	29 3417 3417 2	29 3408 3408 2	29 3400 3400 2
28	28 3416 3416 3	28 3407 3407 3	28 3399 3399 3
27	27 3415 3415 4	27 3406 3406 4	27 3398 3398 4
26	26 3414 3414 5	26 3405 3405 5	26 3397 3397 5
25	25 3413 3413 6	25 3404 3404 6	25 3396 3396 6
24	24 3412 3412 7	24 3403 3403 7	24 3395 3395 7
23	23 3411 3411 8	23 3402 3402 8	23 3394 3394 8
22	22 3410 3410 9	22 3401 3401 9	22 3393 3393 9
21	21 3409 3409 10	21 3400 3400 10	21 3392 3392 10
20	20 3408 3408 11	20 3399 3399 11	20 3391 3391 11
19	19 3407 3407 12	19 3398 3398 12	19 3390 3390 12
18	18 3406 3406 13	18 3397 3397 13	18 3389 3389 13
17	17 3405 3405 14	17 3396 3396 14	17 3388 3388 14
16	16 3404 3404 15	16 3395 3395 15	16 3387 3387 15

THIS IS NOT A LEGALLY RECORDED PLAT. THIS PLAT IS COMPILED FROM THE DESCRIPTIONS IN THE COUNTY AUDITOR'S TAX RECORD, PLATS OF RECORD IN THE COURT HOUSE, INFORMATION FROM THE STATE AND COUNTY HIGHWAY DEPARTMENTS AND OTHER SOURCES.

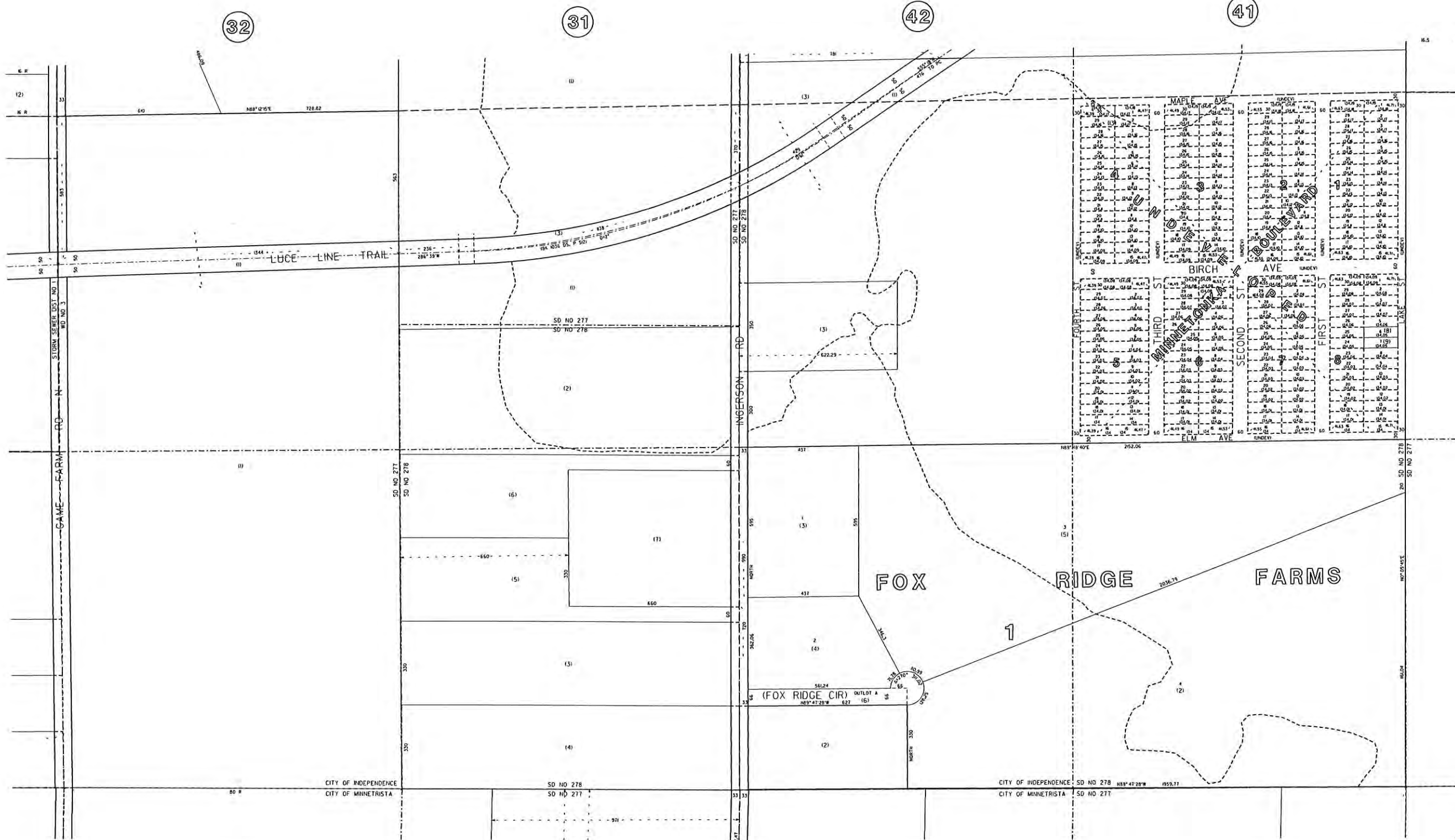
SEC. 3, T.117, R.24

ACREAGE							
SW 1/4				SE 1/4			
NW	SW	NE	SE	NW	SW	NE	SE
40.77	40.55	41.21	40.99	40.85	40.82	41.12	41.09

BERNARD H. LARSON
COUNTY SURVEYOR
HENNEPIN COUNTY, MINN.

S1/2 SEC.34 T.118 R.24

INDEPENDENCE-70



SEC.33,T.118,R.24

SEC.35,T.118,R.24

SEC.3,T.117,R.24

THIS IS NOT A LEGALLY RECORDED MAP. IT REPRESENTS A COMPILATION OF INFORMATION AND DATA FROM CITY, COUNTY AND STATE ROAD AUTHORITIES AND OTHER SOURCES.

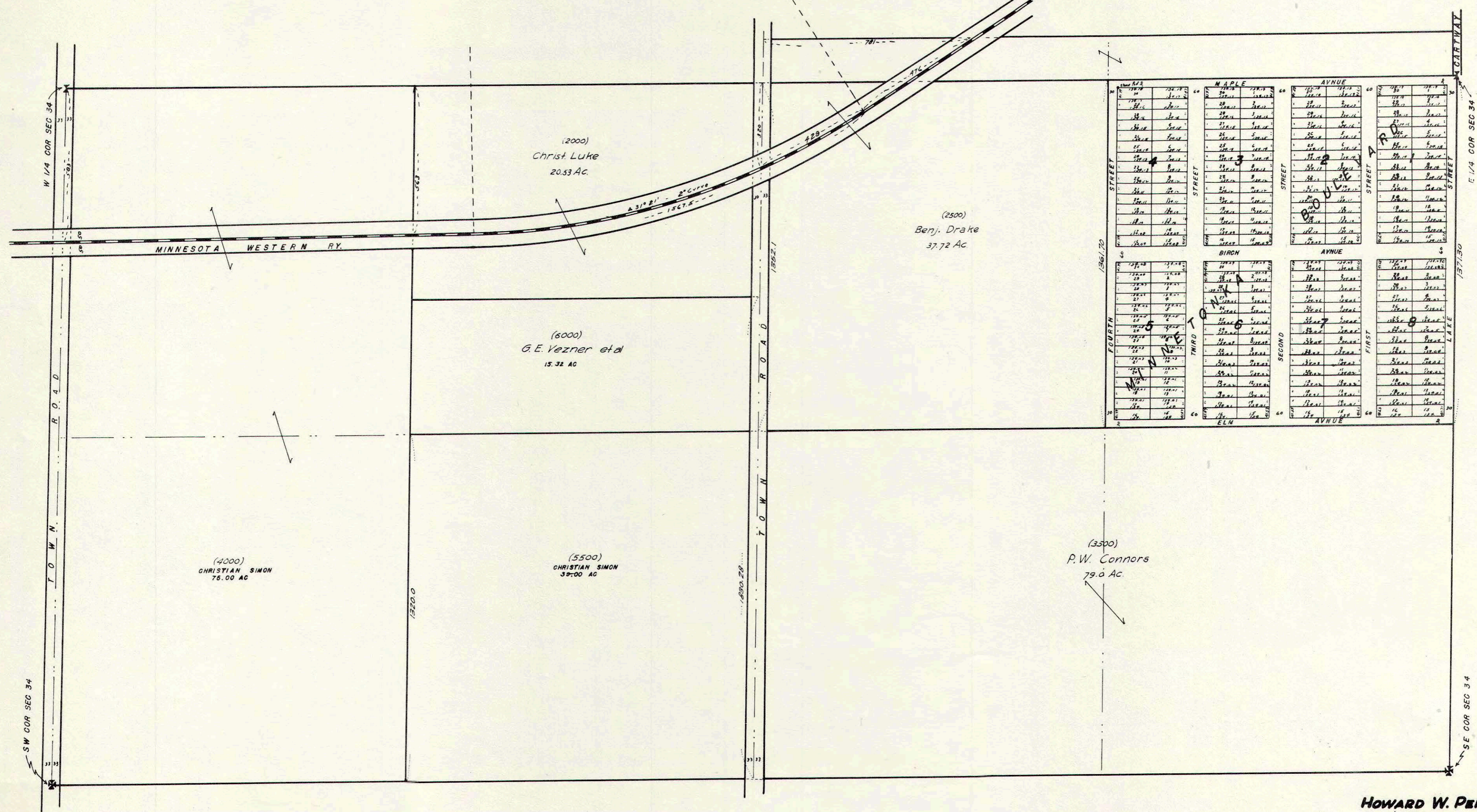


LEGEND

- STORM SEWER DISTRICT BOUNDARY
- SCHOOL DISTRICT BOUNDARY
- WATERSHED DISTRICT BOUNDARY
- INCREMENT BOUNDARY
- MUNICIPAL BOUNDARY

HENNEPIN COUNTY, MINNESOTA
TAXPAYER SERVICES DEPARTMENT
SURVEY DIVISION

S 1/2 SEC. 34, T. 118, R. 24.



(2000)
Christ. Luke
20.53 AC.

(2500)
Benj. Drake
37.72 AC.

(6000)
G. E. Vezner et al
15.32 AC.

(4000)
CHRISTIAN SIMON
75.00 AC

(5500)
CHRISTIAN SIMON
38.00 AC

(3500)
P. W. Connors
79.0 AC.

HOWARD W. PERKINS
County Surveyor
Hennepin County, Minn.